

Newsies Jr

a hair and makeup guide



Helpful Video Resources

Victorian Updo Tutorials



Helpful Video Resources

Makeup Tutorials



Basic Female Stage Makeup

- Step 1: Apply foundation. Your foundation should be **1 shade darker** than your natural skin tone.
 - If you are wearing a microphone, do not apply any makeup in the spot where mic tape goes
- Step 2: Contour + Highlight. (See diagrams + videos)
 - If you are a girl playing a boy, refer to the video in the previous slide for instructions on how to make your face appear more masculine.
 - Contour is different than blush
- Step 3: Blush
 - NO SHIMMER, GLITTER, OR SPARKLE
 - General rule: the more the better. If you feel like you're wearing too much, you probably aren't wearing enough.
- Step 4: Eyeshadow
 - Keep it basic and neutral, no color unless specified for your character
 - Tip: use your contour + highlight shades
- Step 5: Eyeliner
 - Thin line, no wing unless specified
 - Use a dark brown or black depending on what compliments your skin tone
- Step 6: Mascara
 - Girls: Use **black** mascara to define your eyelashes

Basic Male Stage Makeup

- Step 1: Apply foundation. Your foundation should be **1 shade darker** than your natural skin tone.
- Step 2: Contour + Highlight. (See diagrams + videos)
- Step 3: Blush
 - NO SHIMMER, GLITTER, OR SPARKLE
 - General rule: the more the better. If you feel like you're wearing too much, you probably aren't wearing enough.
- Step 5: Eyeliner
 - Use a dark brown eye pencil

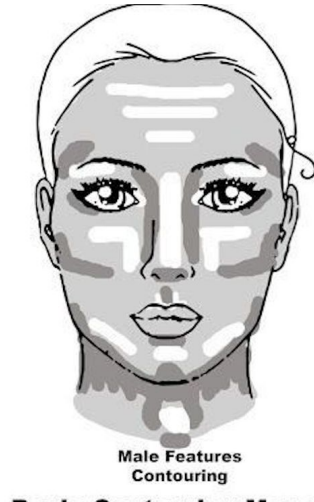
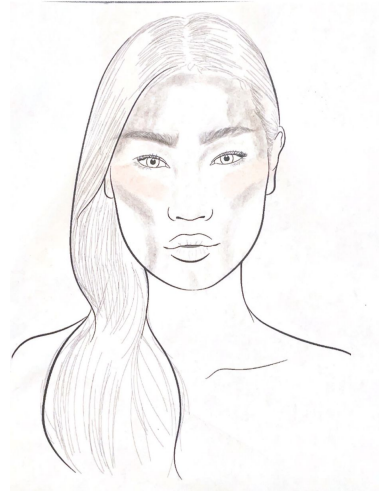
Wig Prep

- The goal is to make your hair be as flat as possible for when we put on the wig
- For those whose hair is too heavy to stay in a pin curl, try two normal braids (not french braids)



Jack Kelly - *Ashley Pham*

- Wig prep
- Base Makeup + Male Contouring
 - NO stubble, add blush (no shimmer)
 - Thin brown eyeliner, no wing
 - Soot
- Act 2: add bruising from the Delancy Bros on right eye
 - We will help you do this



Crutchie - *Kaela Chang*

- Hair: twin braids tied together at the nape of the neck
- Makeup:
 - Basic stage makeup
 - Soot



Kathrine - *Eva Lundgaard*

- Hair
 - Half up half down (going for that Gibson look at the front)
 - [An Everyday Victorian-Style Updo](#)
 - Follow about until the 2 minute mark, leave the rest down
- Makeup
 - Basic stage makeup
 - Eyeshadow: pinks and purples
 - Blush: pink and coral
 - Lipstick: pink



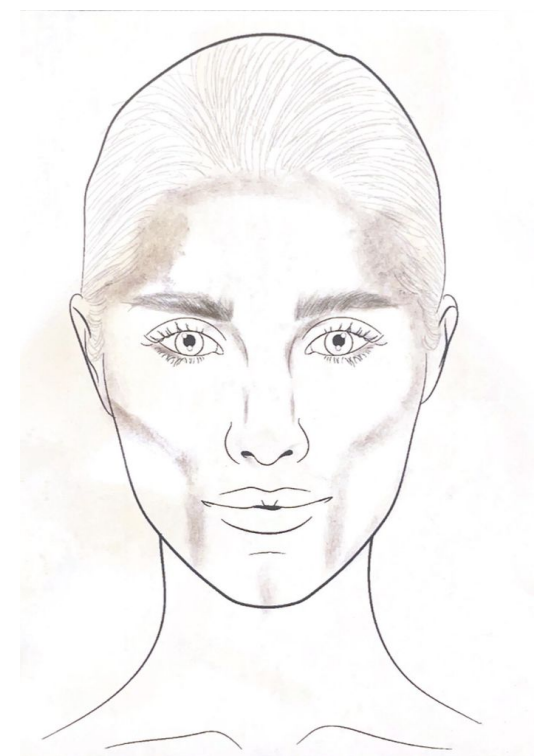
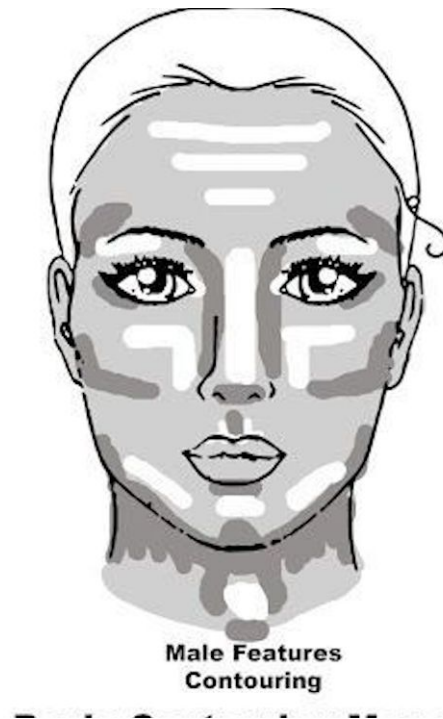
Darcy - *Alaina Gupta*

- Hair:
 - Twists into single braid or bun
- Makeup
 - Basic feminine stage makeup
 - Depending on costume colors, colorful eyeshadow may be okay



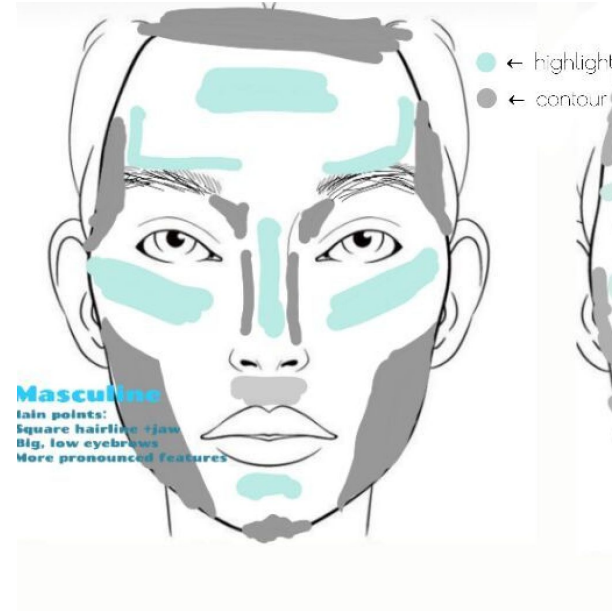
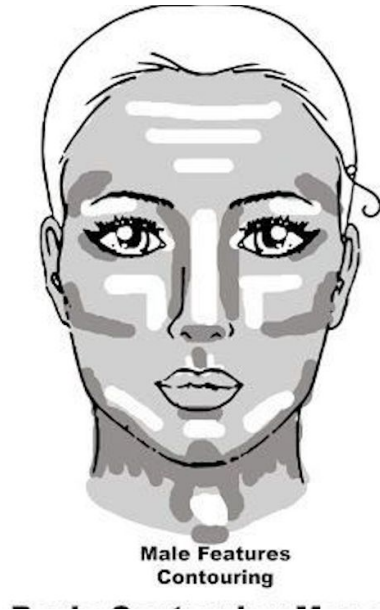
Wiesel - *Annika Breiland*

- Hair
 - Wig prep
 - Mustache
- Makeup
 - Basic stage + male contour



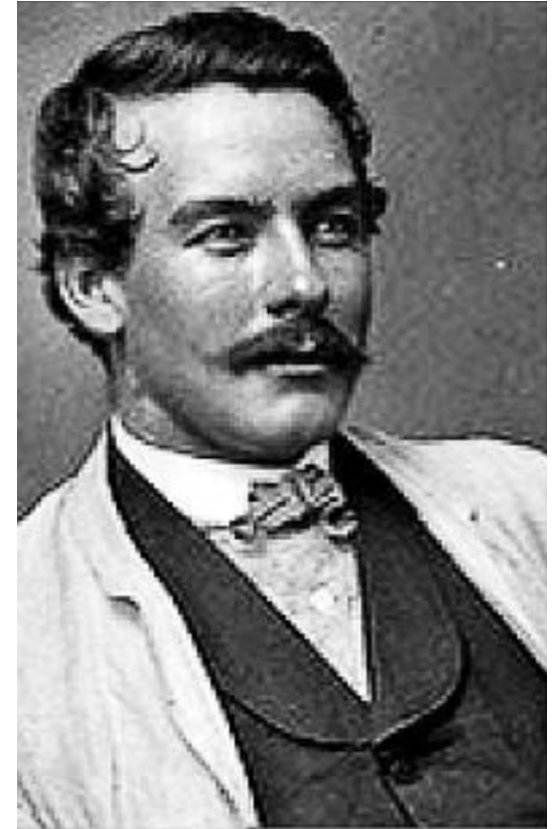
Morris Delancey - *Gemma Marfise*

- Hair
 - Wig prep
 - Pencil mustache drawn on (we will do this for you)
- Makeup
 - Basic stage base + male contour



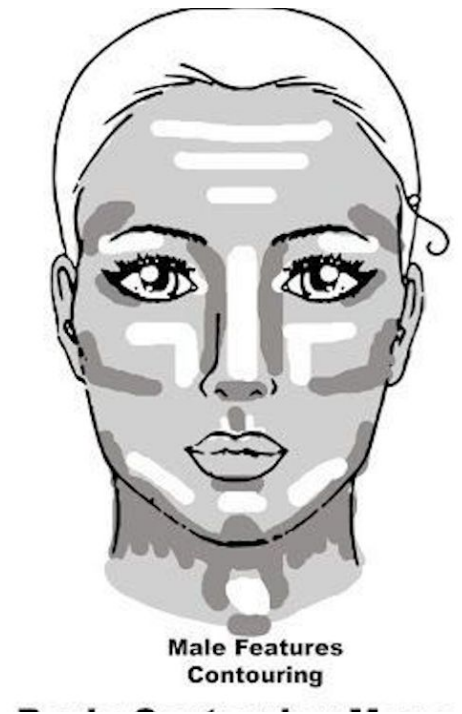
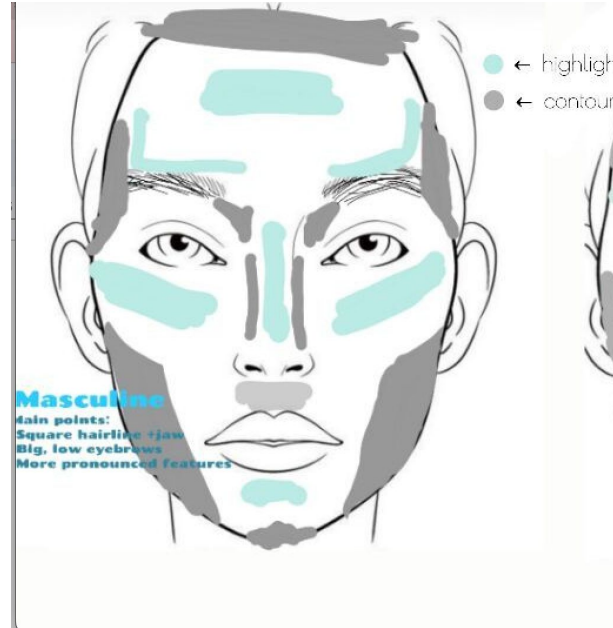
Oscar Delancey - *Caden Malinowski*

- Hair:
 - Gelled back look (see photo)
- Makeup
 - Basic stage makeup



Davey - Anya Chen

- Hair:
 - Wig prep
- Makeup:
 - Basic stage makeup with masculine contour



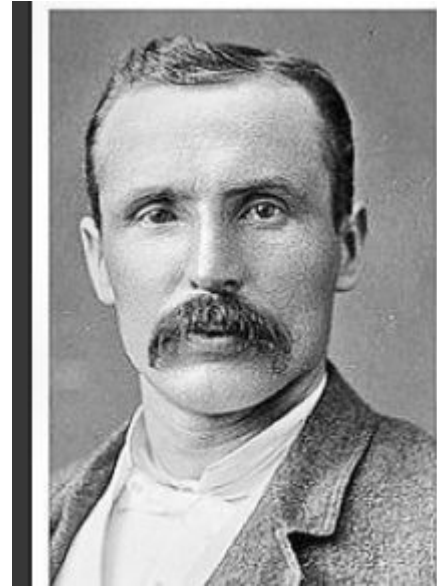
Les - *Elle Studer*

- Hair:
 - French braid half up half down
 - Hair ribbon
- Makeup:
 - Basic stage makeup



Joseph Pulitzer - Josiah Willson

- Hair
 - Gelled back
 - Fake mustache
- Makeup
 - Basic stage makeup



Bunsen - *Avery Watson*

- Hair:
 - Braided low bun
- Makeup
 - Basic stage makeup
 - Small wing is okay



Seitz - *Mia Patel*

- Hair:
 - Victorian bun (see photo)
 - Refer to the victorian updo slide for instructions
- Makeup:
 - Basic stage makeup
 - Small wing okay



Hannah - *Avianna Nazzal*

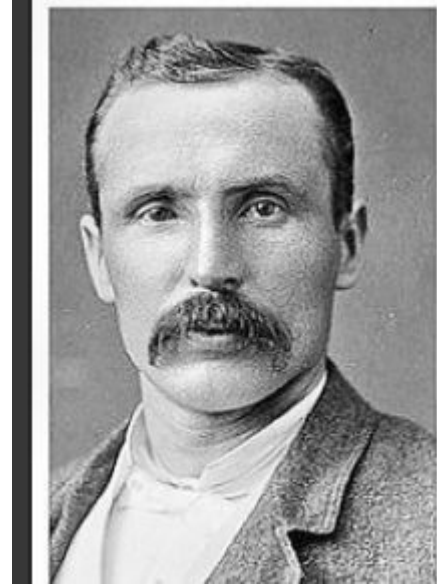
- Hair:
 - Victorian updo
 - Refer to the victorian updo slide for instructions
- Makeup:
 - Basic stage makeup
 - Small wing ok



Snyder - *Braydon Hatlo*

Porter

- Hair:
 - Hair should be gelled +neat
- Makeup:
 - Basic stage makeup



Medda Larkin - *Ava Thompson*

- Hair:
 - Wig prep
- Makeup:
 - Basic stage makeup
 - Eyeshadow: pinks + orange, some shimmer okay
 - Lipstick: bright pink



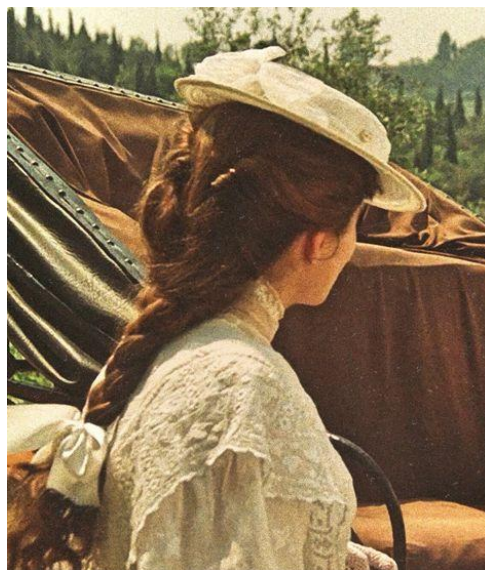
Ethel/Brooklyn Newsie - *Riley Wilson*

- Hair:
 - Ethel Look: twisted half up half down/braided bun (see photo)
 - Newsie look: take out braids, just half up half down with the twist
- Makeup:
 - Basic stage makeup
 - When Newsie, add soot



Ada/Brooklyn Newsie - *Audrey Sansone*

- Hair:
 - Ada look: half up half down with bun
 - Newsie look: take out braids, just half up half down into braid
- Makeup:
 - Basic stage makeup
 - When Newsie, add soot



Pat/scab - *Milana Chacon*

- Hair:
 - Curl hair with a curling iron
 - Twists into low bun OR twists at hairline, leave the rest down (must be curled)
- Makeup:
 - Basic stage makeup



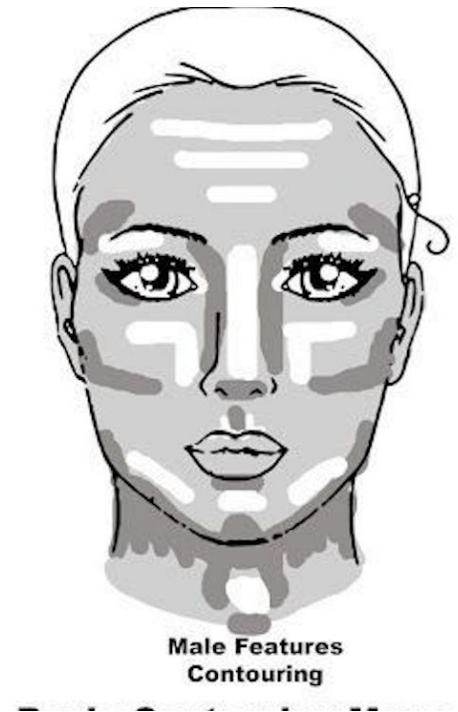
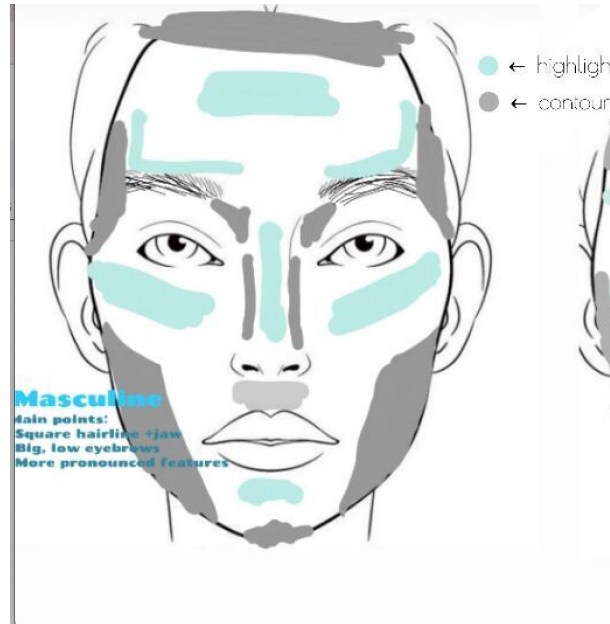
Customer/scab - *Chole Nyberg*

- Hair:
 - side part twist + leave hair down
- Makeup
 - Basic stage makeup



Police Officer/Bill - *Allison Zhong*

- Hair:
 - Wig prep
 - Mustache
- Makeup:
 - Basic stage makeup with male contour



Woman/Woodside Newsie - *Audrey Borders*

- Hair:
 - Twists into high bun (or low bun, depending on hat for newsie)
 - Newsie hair: bun becomes ponytail (woodside accessory can go in hair?)
- Makeup
 - Basic stage makeup
 - When Newsie, add soot



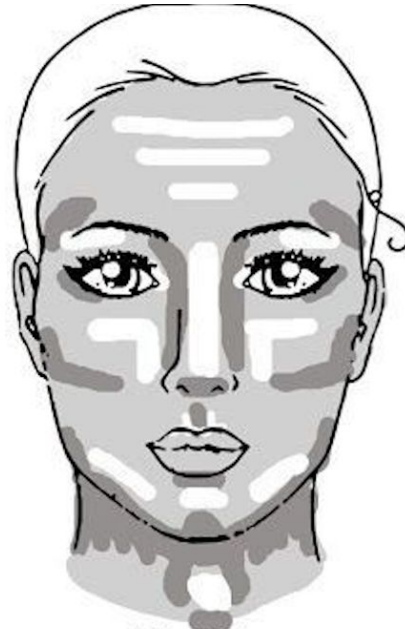
Customer/Gov. Teddy Roosevelt - *Elias Stewart*

- Hair:
 - Mustache
 - Gelled hair
- Makeup:
 - Basic stage makeup

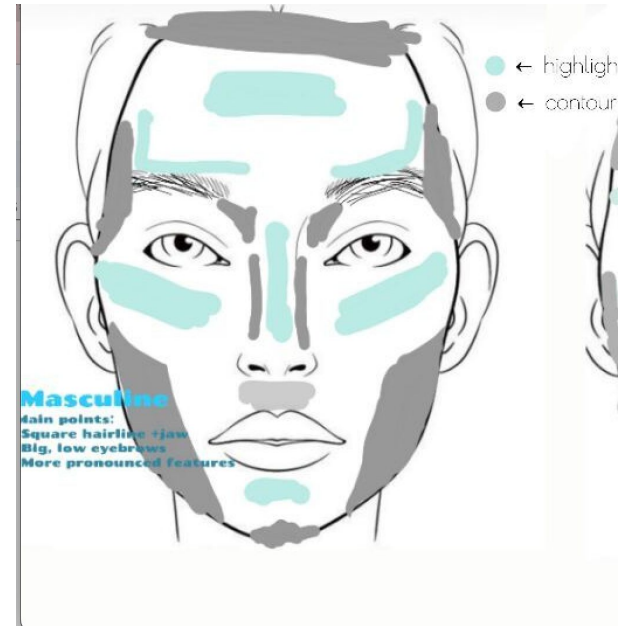


Tommy Boy - *Anjali Prabhakar*

- Hair:
 - Wig prep
- Makeup:
 - Basic stage makeup with male contour
 - soot

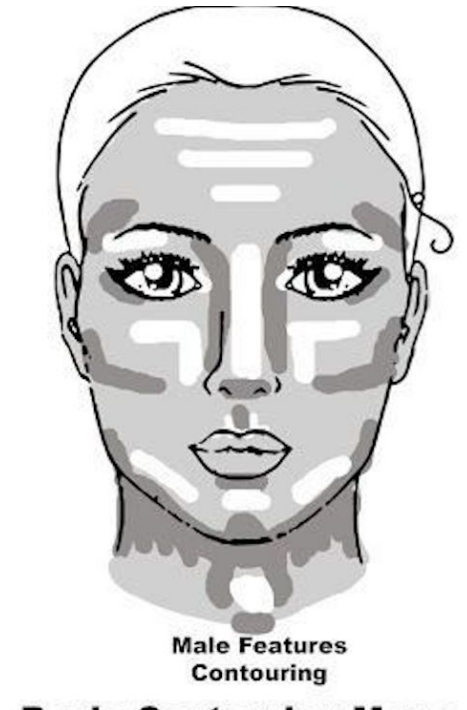
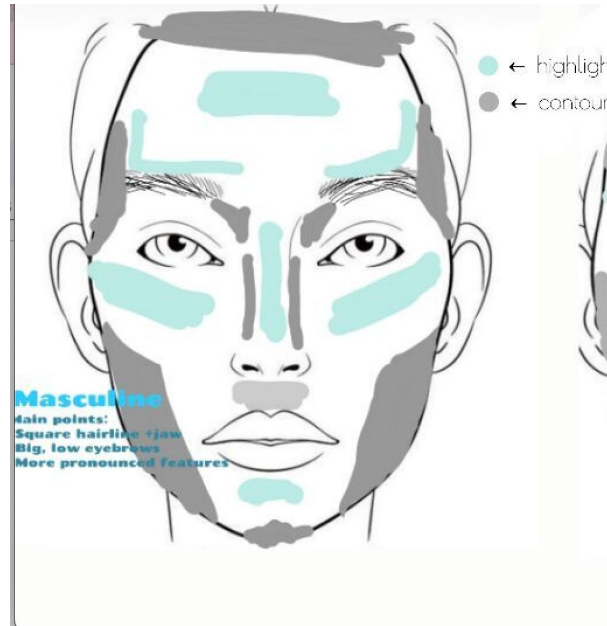


**Male Features
Contouring**



Albert/Flushings Newsie - *Hannah Allmen*

- Hair:
 - Wig prep
- Makeup:
 - Basic stage makeup with male contour
 - Soot



Olive/Spot Conlon - *Mia Doursounian*

- Hair:
 - Bowery brigade look: twists into low bun
 - Spot look: take braids down
- Makeup
 - Basic stage makeup
 - When Spot, add soot



Race - *Isabella Zhu*

- Hair:
 - Half up half down
- Makeup:
 - Basic stage makeup
 - Soot



Muriel - *Audrey McDonald*

- Hair:
 - Half up half down
- Makeup:
 - Basic stage makeup
 - Soot



Hazel - *Kensy Sponseller*

- Hair
 - Side part + side braid
- Makeup:
 - Basic stage makeup
 - Soot



Buttons - *Arden Gatewood*

- Hair:
 - Low bun
- Makeup:
 - Basic stage makeup
 - soot



Romeo - *Landon Tsang*

- Hair:
 - Gelled, “romantic” look
- Makeup:
 - Basic stage makeup



Pigtails/Woodside Queens Newsie - *Noelle Kraver*

- Hair:
 - Middle part, french braids into pigtails (loose hair must be curled) OR uneven twin braid pigtails - could be cute
 - For woodside, queens look, maybe put blue ribbons/accessories in hair?
- Makeup
 - Basic stage makeup
 - Soot



Nancy/SI Newsie - *Emily*

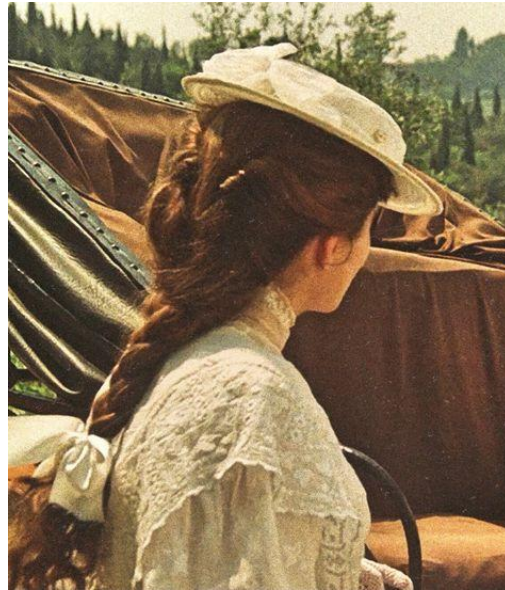
Rank

- Hair:
 - One french braid
- Makeup
 - Basic stage makeup
 - Soot



Jojo/Bronx Newsie - *Lauren Fiore*

- Hair:
 - Twists into single braid
- Makeup:
 - Basic stage makeup
 - soot



Specs/Flushings Newsie - *Chloe Vartanian*

- Hair:
 - Braids into low bun
- Makeup:
 - Basic stage makeup
 - soot

