

1980's Makeup

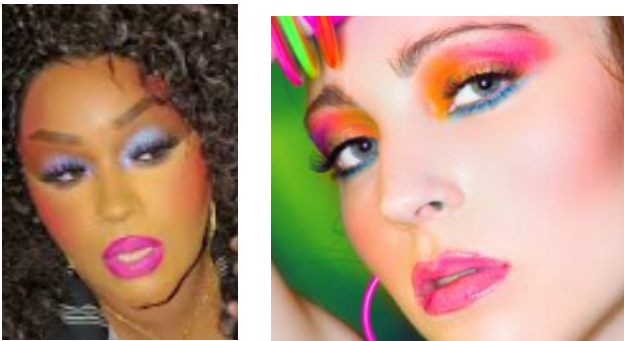
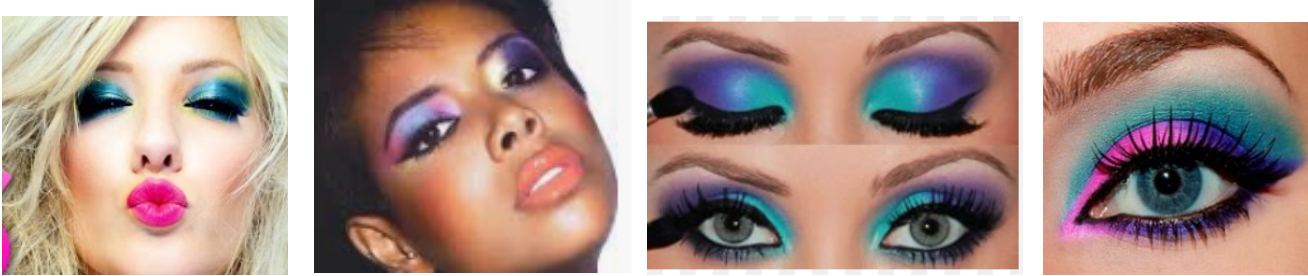
Here is a reference guide to the looks of the 1980's. Please review all the information to get ideas.

There were many trends like bold eyeshadow, mauve blush, smudgy eyeliner, and bushy eyebrows. Some iconic celebrities were Madonna, Whitney Houston, Cyndi Lauper, and Brooke Shields.

Makeup ranged from: colorful/neon, bold and smokey, to pretty in pink.

COLORFUL EYES AND BRIGHT LIPS

Bold to neon and everything in between.



MATURE - GLAM

Lots of eye liner and lips in the red color family



ROCKER - DRAMATIC AND SMOKEY

This is when the smokey eye started, especiall for Rocker Chicks. Lips can be red, muted or nude. It's all about the eyes.



SWEET - MAUVE AND BUSHY EYEBROWS

This is the era Mauve became super popular. Used it on eyes, cheeks and lips.



MAKE UP

We will have many provided items, but you may use your own products if approved by Mrs. Kester.

Please purchase:

- base foundation/makeup
- eye liner
- eyelash glue
- eyebrow pencil/pen
- eye shadow primer (optional)

FOUNDATION

Full coverage foundation is a must. Select a color at least **1-2 shades darker than your natural skin tone**. Concealer is optional.

EYE SHADOW

If you are assigned a bold eye look, do your eyeshadow BEFORE your foundation and concealer. There will be lots of shadow fall out. Eye shadow primer is optional but may be helpful for the bold eye looks.

EYE LINER

Black liner. Cream stick may work best. Many looks will require inner water line and many smokey eye looks.

EYEBROWNS

Eyebrows are strong and bushy. If you're blonde, be sure to darken your brows (see pics)

EYELASHES

Will be provided if assigned based on character. You will need to maintain (clean) and reuse them throughout the show.

BLUSH

Will be provided.

LIPS

Will be provided. Liner may help to shape lips if wanted.

Make up "Look" by Character

- Protesters/Hippies: Basic look. "Sweet" colors in peach, coral, pink, mauve
- Waitresses: colorful/bold
- Mayor/Hilda: mature makeup look
- Rocker Chicks: heavy liner/smokey eye. Line both top and bottom inner eye line.

Make Up TUTORIALS

You do not have to purchase any products illustrated, but good reference for technique.

[Rocker Look #1](#)

[Rocker Look #2](#)

[Rocker Look #3](#) could also use other looks and colors

[Waitress Look #1](#)

[Waitress Look #2](#) – recommend applying foundation after eye makeup

[Waitress Look #3](#) – recommend applying foundation after eye makeup

HAIR

There will be many wigs assigned but there will be many using their natural hair.

Some will have high pony tails or half-up/half-down. May include headbands, scrunchies and bows.

We will have hairspray and accessories to create your look.

