

Unit 4

1

文化评量

Wénhuà Píngliáng

Cultural Evaluation

Decide if each statement is true (对 *duì*) or false (不对 *bú duì*).

1. “Dead” hutongs are called such because their openings face the direction where the sun sets.
2. The Palace museum is an example of a very large and very famous hutong.
3. According to fengshui, bathrooms should not face kitchens because the opposing flows of water may affect the residents’ careers.
4. Traditionally, a mansion and any other important edifice would likely face the south.
5. The end of the bed should not face the window only if you live in the northern hemisphere.
6. In Chinese culture, students ought to work as much as possible so that they can have some fall-back money in the event they can’t find a job right after graduation.
7. From the reading, it can be deduced that Chinese parents would be less likely to end up in a nursing home than American parents would.
8. Loyalty and gratitude toward one’s parents should not terminate at the terminus of a parent’s life.

2

口语评量

Kǒuyǔ Píngliáng

Oral Evaluation



Three people in a group, invite them to come to your home to chill out on weekend.

- Ask if they are free this weekend and if they want to come to your home.
- Ask what the hosts plan to do on that day.
- Ask the exact day and time.
- Ask the direction to the host’s home.
- Explain the direction of your home and tell what means of transportation can be used and how long it takes.
- Guests ask if they need to bring anything over.



3

写作评量

Xiězuò Píngliáng

Writing Evaluation

Write an invitation for your friends for a party at your home. In the invitation it must have date, time, address, clear direction and means of transportation to your home, and what you are going to prepare for the party. (Note: you can add things like dress code if you would like.)

4

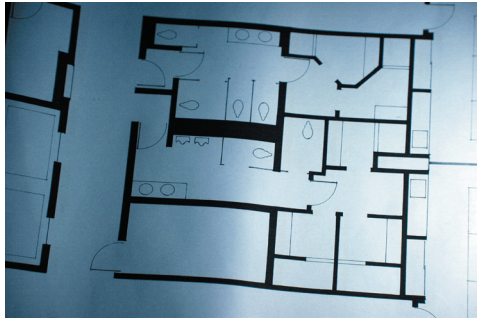
看图说话评量

Kàntú Shuōhuà Píngliáng

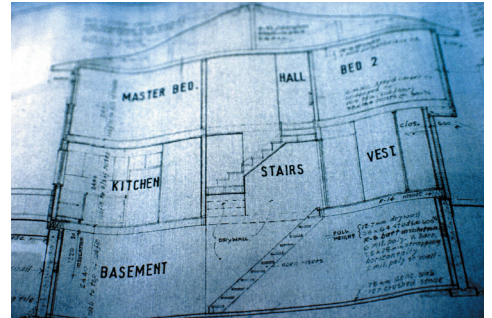
Visual Evaluation

Look at the following house layout and say what room types each picture has and how you want to use them for.

1



2



5

阅读评量

Yuèdú Píngliáng

Reading Evaluation

Read the paragraph and answer the following questions.

上个月我搬(*to move*)到了新家，新家是两层楼的平房，有一个大车库，房子前后都有院子。我的房间在二楼，我有自己的浴室。楼上还有一个小阁楼，我喜欢在那里画画。这个星期六我要请朋友来我的新家玩，我现在正在做邀请卡。我想我们可以从下午四点开始，在后院一边烤肉(*to barbecue*)一边玩。天黑了以后，我们可以到客厅里，一起看电影或是玩游戏机。

Shàngge yuè wǒ bān dào le xīn jiā, xīn jiā shì liǎngcéng lóu de píngfáng, yǒu yíge dà chēkù, fángzi qián-hòu dōu yǒu yuànzi. Wǒde fángjiān zài èr lóu, wǒ yǒu zìjǐ de yùshì. Lóu shàng hái yǒu yíge xiǎo gélóu, wǒ xǐhuan zài nàlǐ huàhuà. Zhèige Xīngqīliù wǒ yào qǐng péngyou lái wǒde xīn jiā wán, wǒ xiànzài zhèng zài zuò yāoqǐngkǎ. Wǒ xiǎng wǒmen kěyǐ cóng xiàwǔ sì diǎn kāishǐ, zài hòuyuàn yìbiān kǎoròu yìbiān wán. Tiān hēi le yǐhòu, wǒmen kěyǐ dào kètīng lǐ, yìqǐ kàn diànyǐng huòshì wán yóuxìjī.

1. 他是什么时候搬家的? Tā shì shénme shíhou bānjiā de?
2. 他的新家有几个院子? Tāde xīn jiā yǒu jǐ ge yuànzi?
3. 他在他的房间画画吗? Tā zài tāde fángjiān huàhuà ma?
4. 星期六下午四点的时候，他们要做什么?
Xīngqīliù xiàwǔ sì diǎn de shíhou, tāmen yào zuò shénme?
5. 要是天黑了以后，他们可以做什么?
Yàoshi tiān hēi le yǐhòu, tāmen kěyǐ zuò shénme?